

***Visiting of Wetlands International Camp on 10.10.2010  
and LiDAR- Ortho-Photo- and Aerial-Data from  
05.08.2007***

***by***

***H.-D. Viktor Boehm***

***Kalteng Consultants [www.kalteng.org](http://www.kalteng.org)***

***Airborne Laser Scanner***

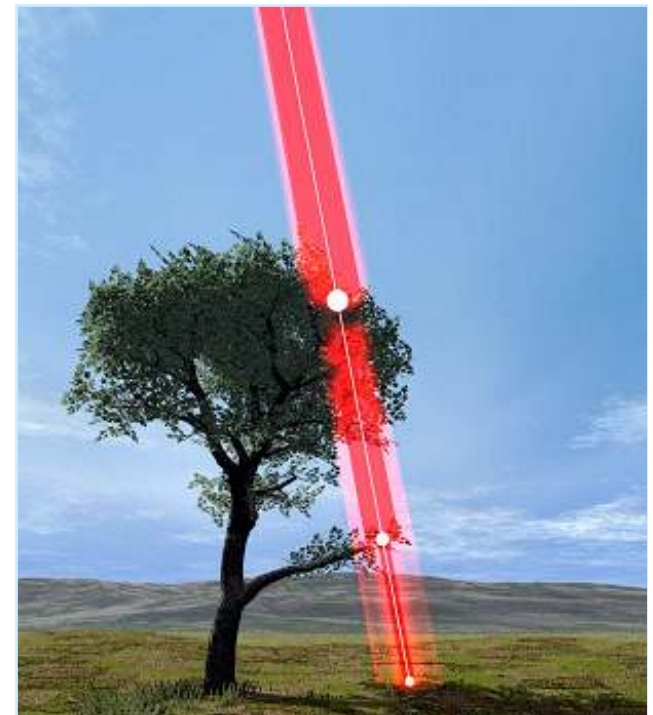
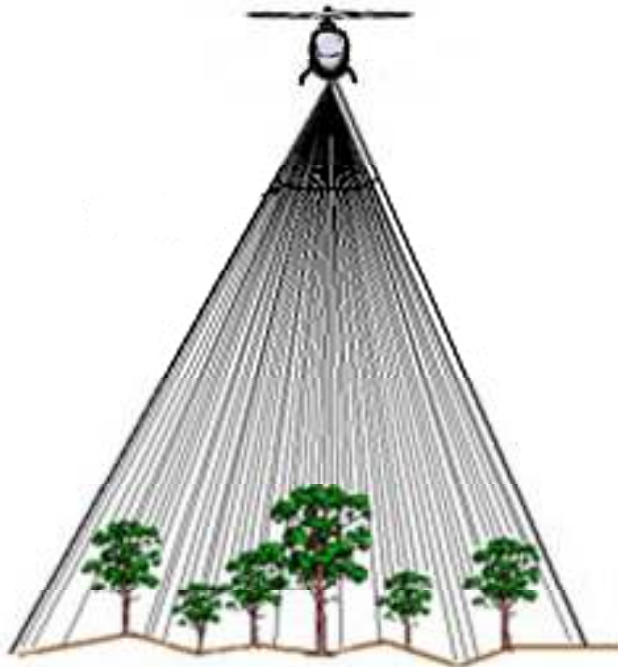


**ALS = Airborne Laser Scanning = LiDAR**

# Airborne Laser Scanner

Tree Height Measurement  
with **First (FE)**, Medium and  
**Last Laser Echo (LE)**  
or with Full Waveform  
Digitization;

**100,000 Laser Pulses per sec**  
or  
**360.000.000 Laser Pulses per h**



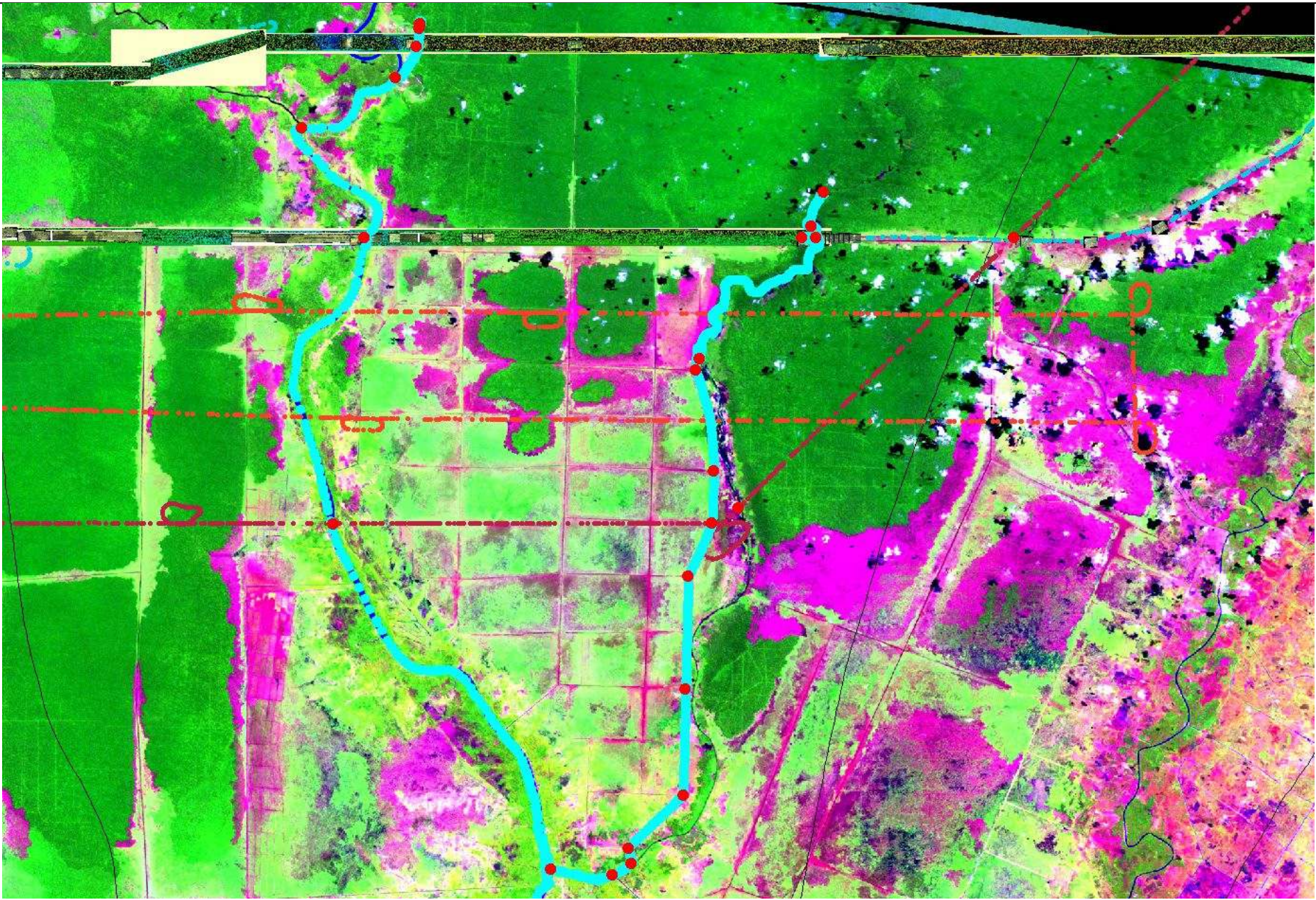


# Aerial Photos from Ex-MRP: Main channel at Kapuas and main canal with WI-camp blocking by dams, right



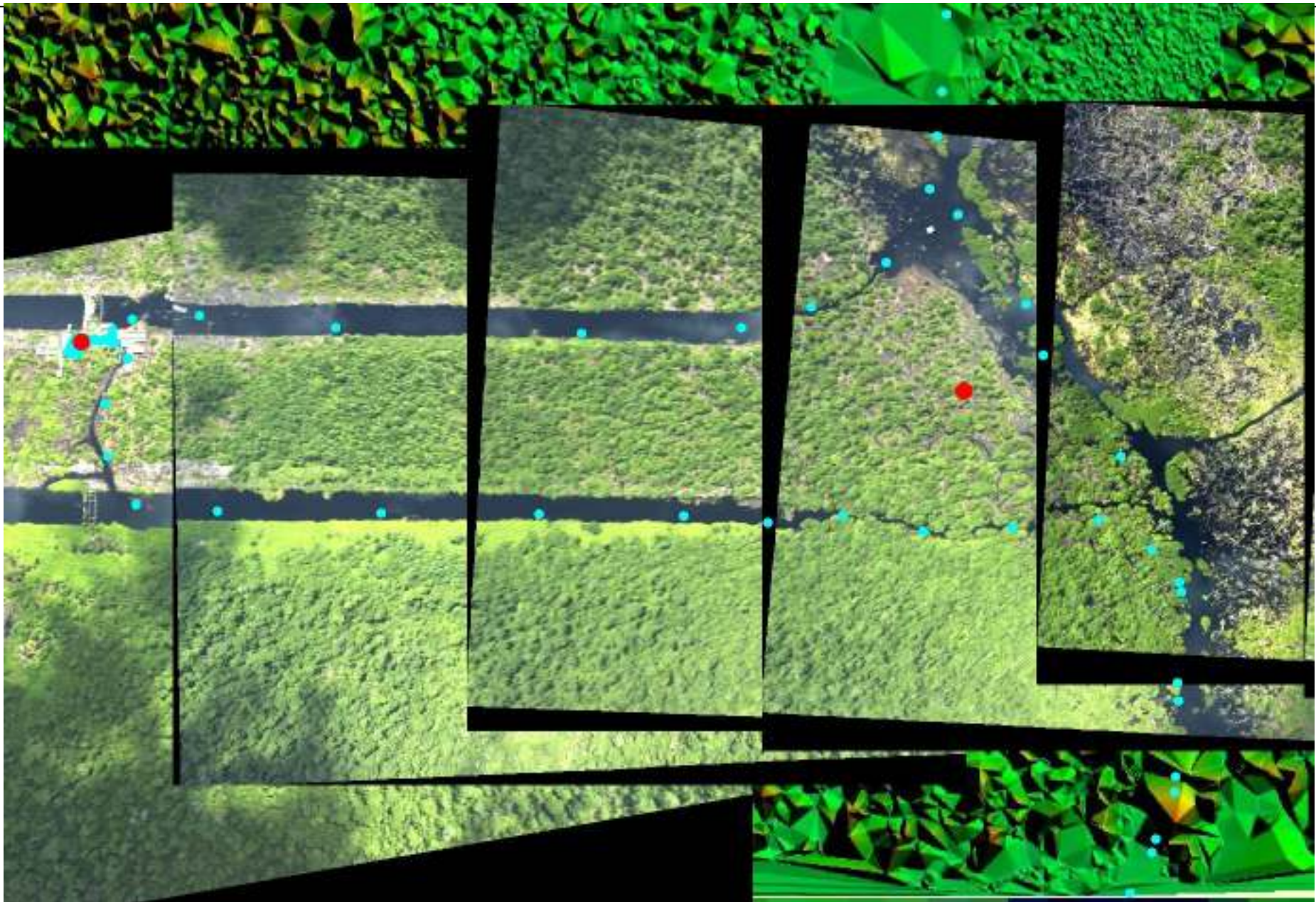


# Landsat image from 5.8.2007 with LiDAR-Tracks at same day and GPS-boat-track from 9.+10.10.2010





# Ortho-Photos from 5.8.2007 on LiDAR-Track and GPS-boat-track from 10.10.2010 (turquoise)



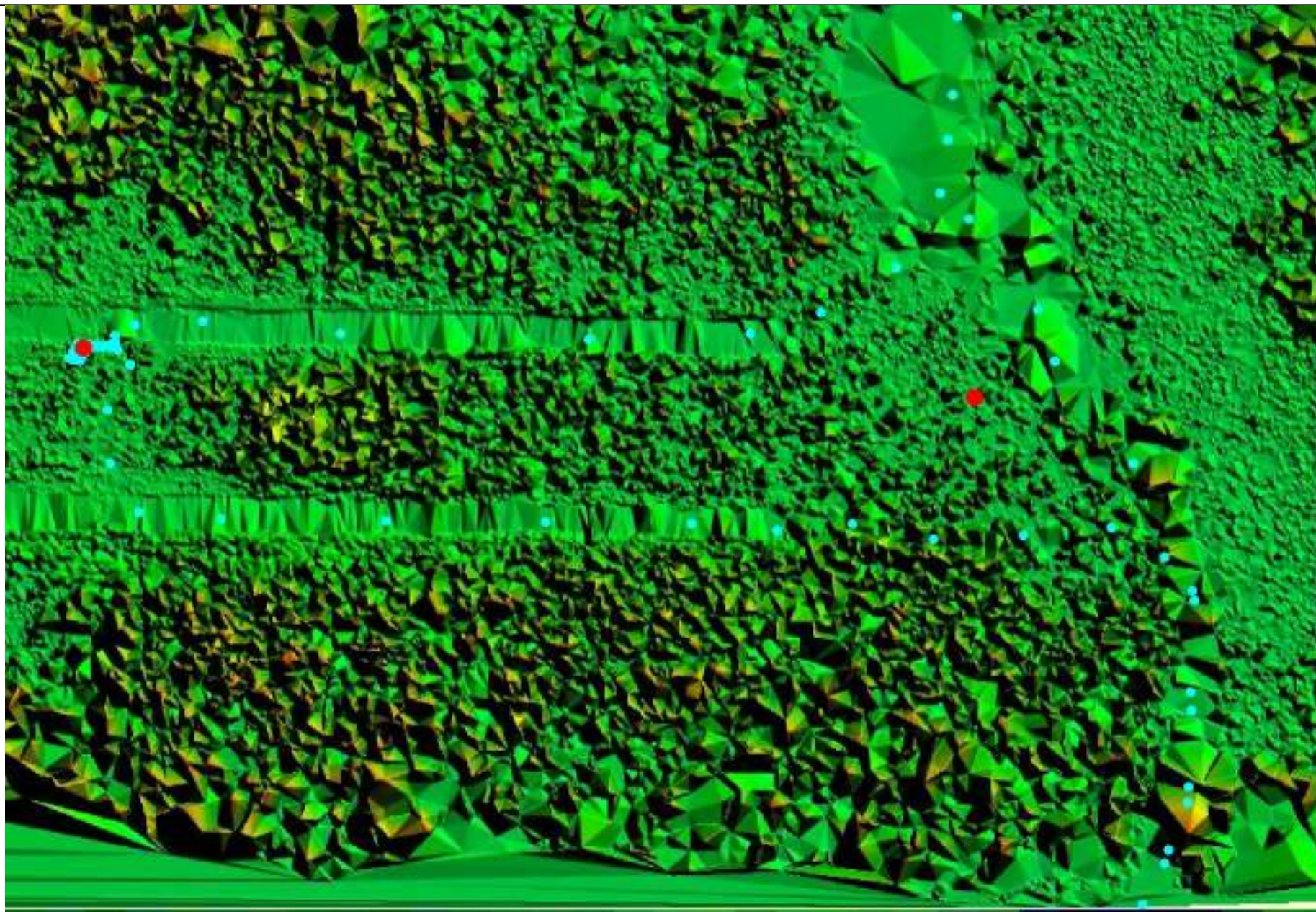


## Ortho-Photo from 5.8.2007 and GPS-boat-track from 10.10.2010 (turquoise)





# **LiDAR-DSM-Data from 5.8.2007 with Mentangai and GPS-boat-track from 10.10.2010 (turquoise)**





## Photo of WI-Southern Channel taken on 10.10.2010





## Photo of WI-Nursery taken on 10.10.2010





## Photo of WI-Northern Channel taken on 10.10.2010





**Photo of WI-Camp  
taken on 10.10.2010**





**Photo of WI-Camp with nursery  
taken on 10.10.2010**





## Photo of WI-Camp taken on 10.10.2010





**Photo of WI-Camp  
taken on 10.10.2010**





**Photo of WI-Camp  
taken on 10.10.2010**





**Photo of WI-Camp with trees  
taken on 10.10.2010**





**Photo of WI-Camp with trees  
taken on 10.10.2010**





**Photo of WI-Camp  
taken on 10.10.2010**



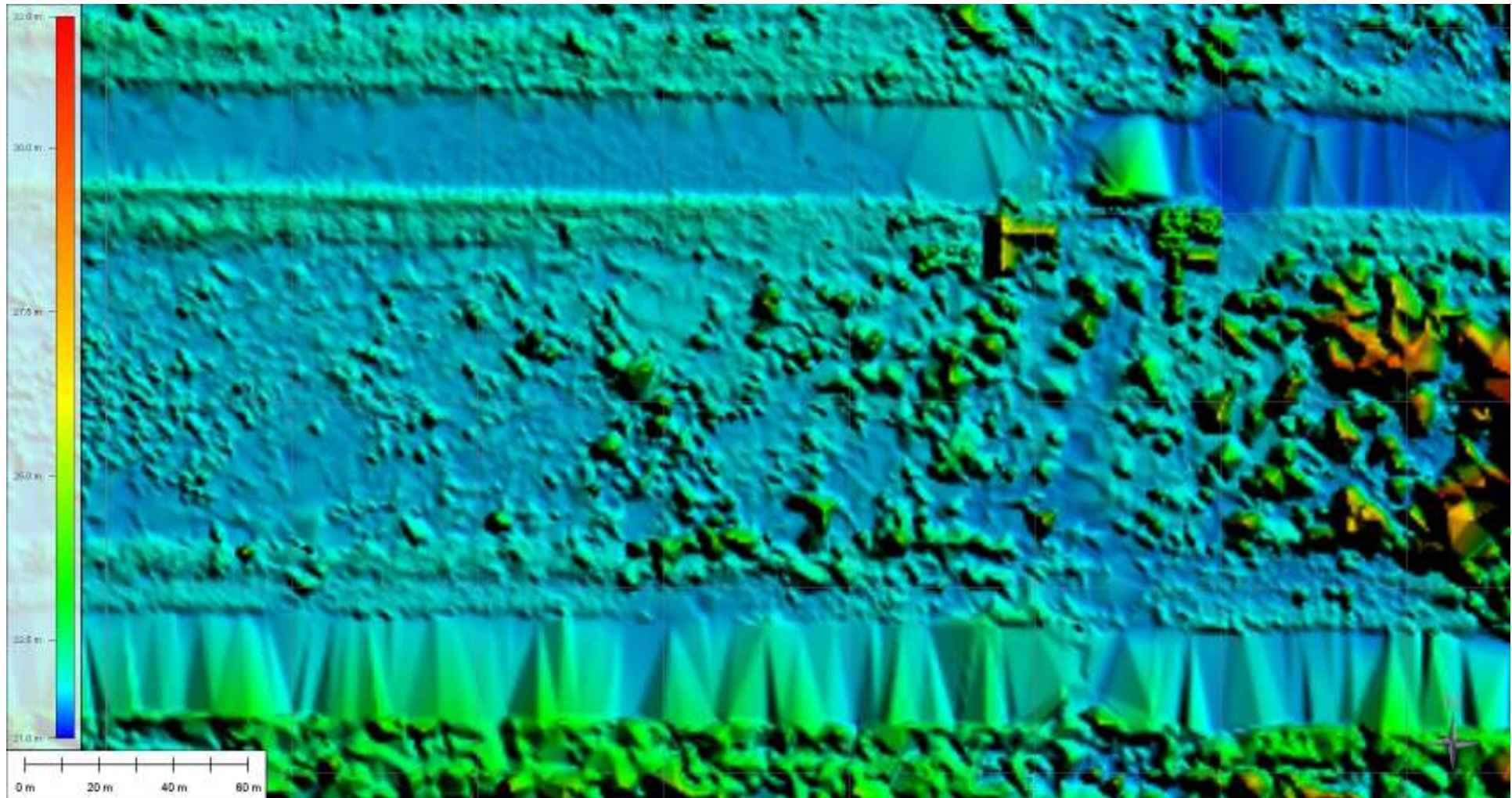


## Photo of main channel near WI-Camp taken on 10.10.2010





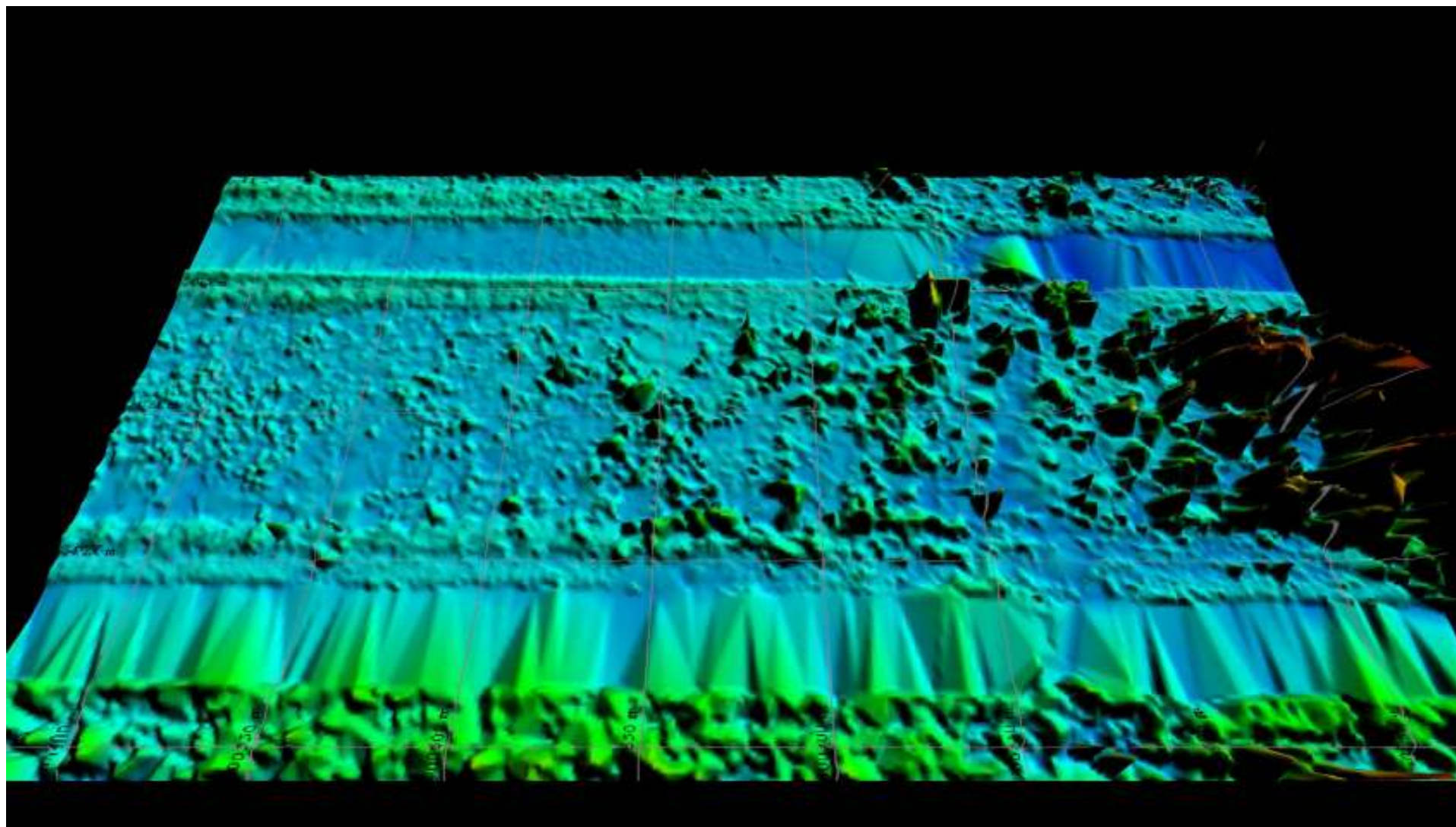
## LiDAR-DSM of main channel at WI-Camp from 05.08.2007



Colours showing the elevation of the objects



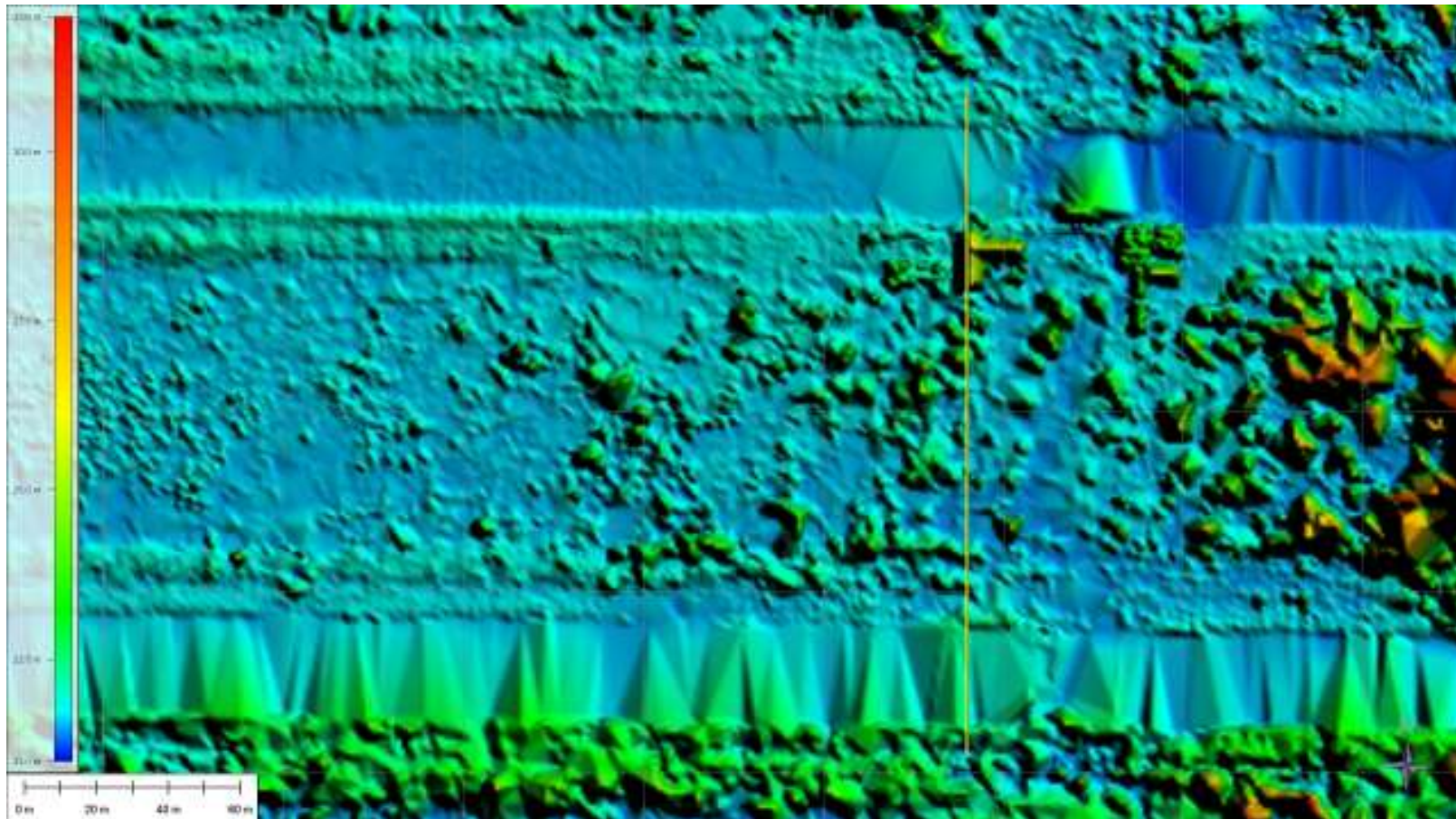
## LiDAR-DSM-3D of main channel at WI-Camp from 05.08.2007



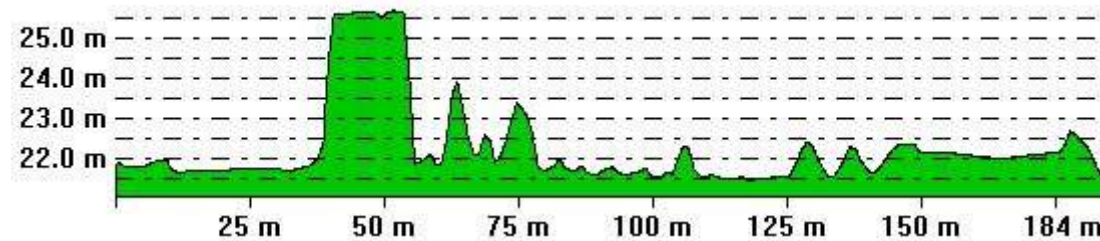
Colours showing the elevation of the objects



# LiDAR-DSM of main channel at WI-Camp from 05.08.2007



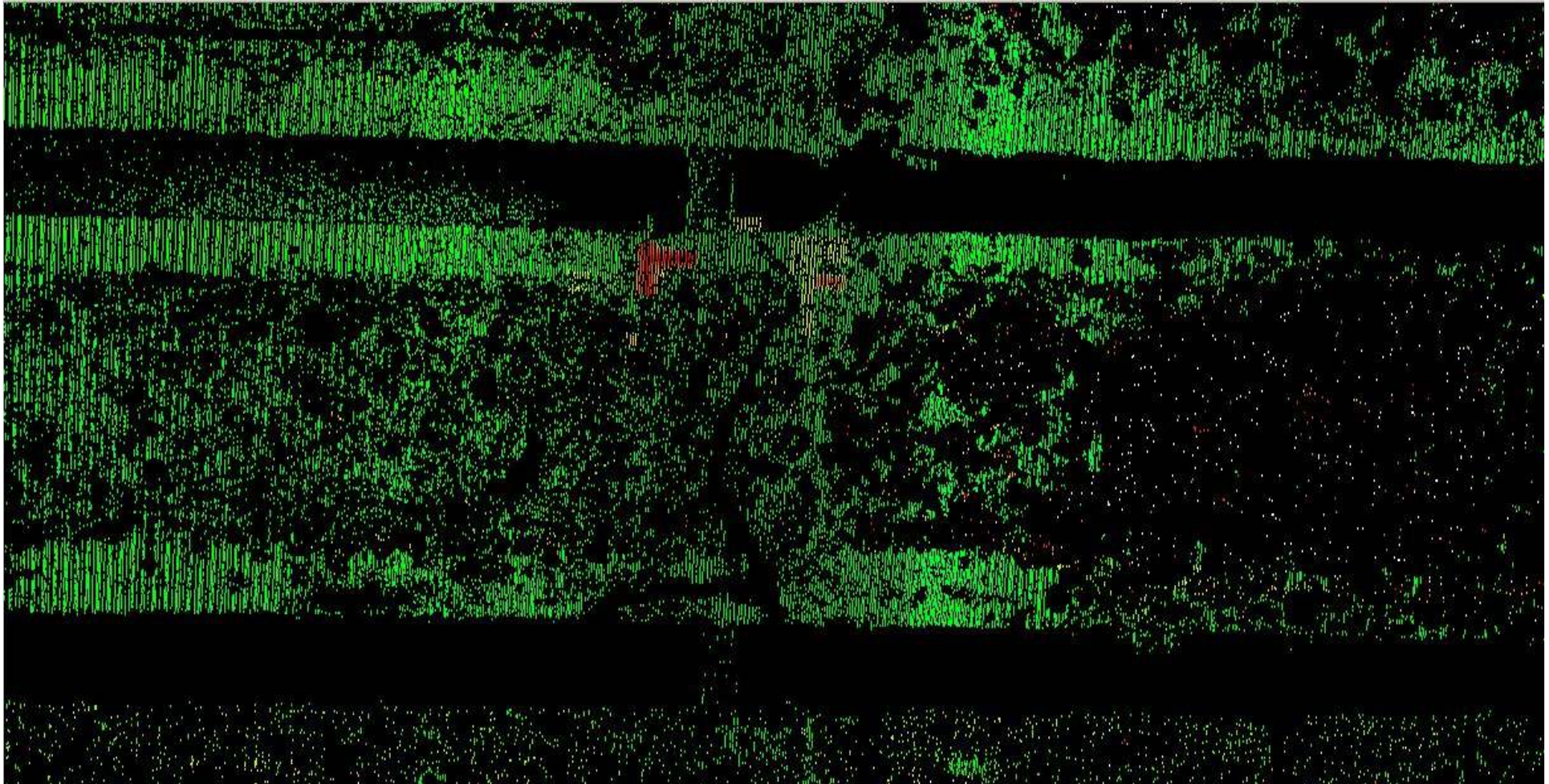
From Pos: 900740.000, -247111.000      To Pos: 900740.000, -247295.000



Profile of Channels  
and WI-camp



## **LiDAR-DSM-LAS of main channel at WI-Camp from 05.08.2007**

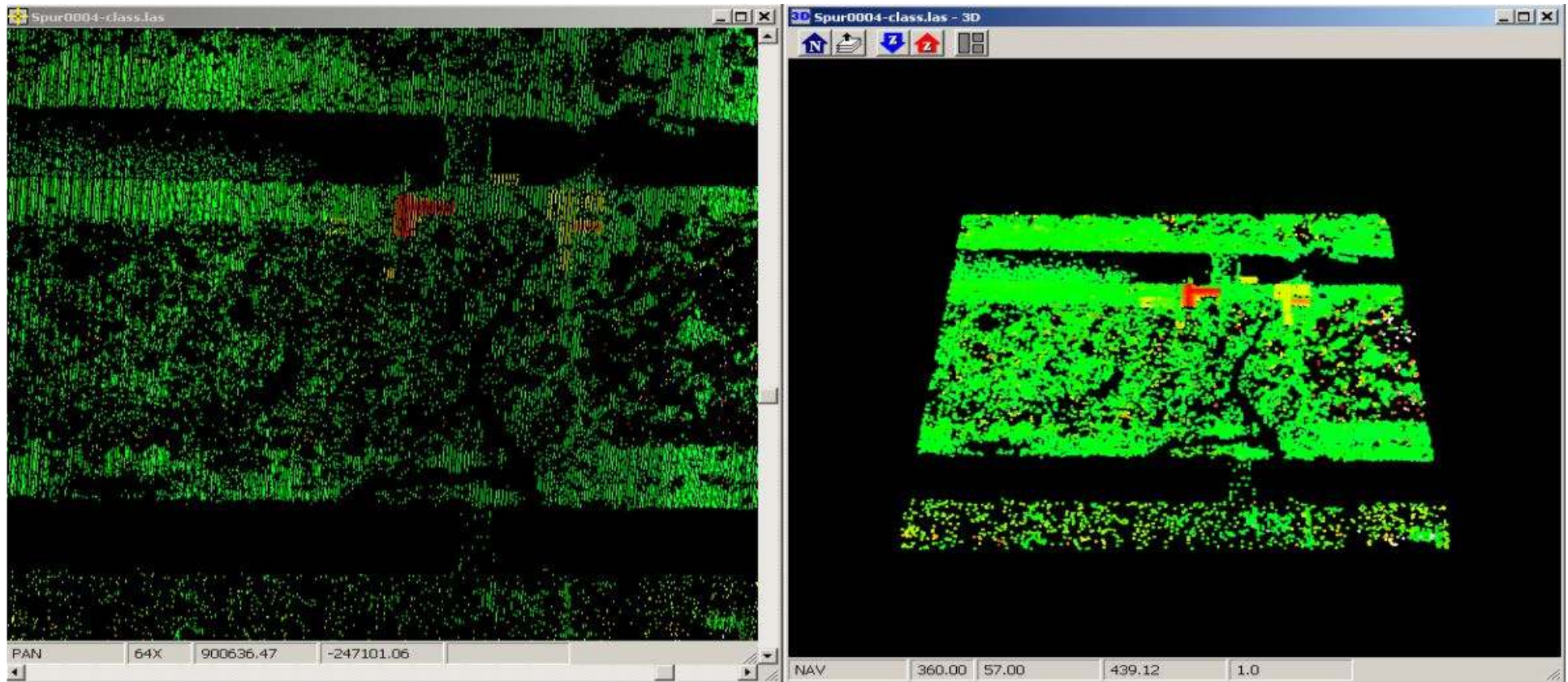


Laser cloud

Colours showing the elevation of the objects



## **LiDAR-DSM-LAS of main channel at WI-Camp from 05.08.2007**



Laser cloud, right in 3D-presentation  
Colours showing the elevation of the objects



## Summary

---

- The LiDAR-Data, Ortho- and Aerial-Photos were taken on 5.8.2007
- The Wetlands International Camp in the frame of CKPP was finished in 2007/2008
- In Aug. + Sept. 2009 strong fires came close to the WI-Camp
- 2010 is a „La Nina“-year with a lot of water and nearly no dry season
- on 10.10.2010 the black water goes over the WI-dams to the Mentangai river,  
the water level was on the 10.10.2010 approx. 1m to 2m higher as normal in this  
time of the year





**Photo from Orang  
Utan with baby on  
Kaja Island in  
Rungan river**